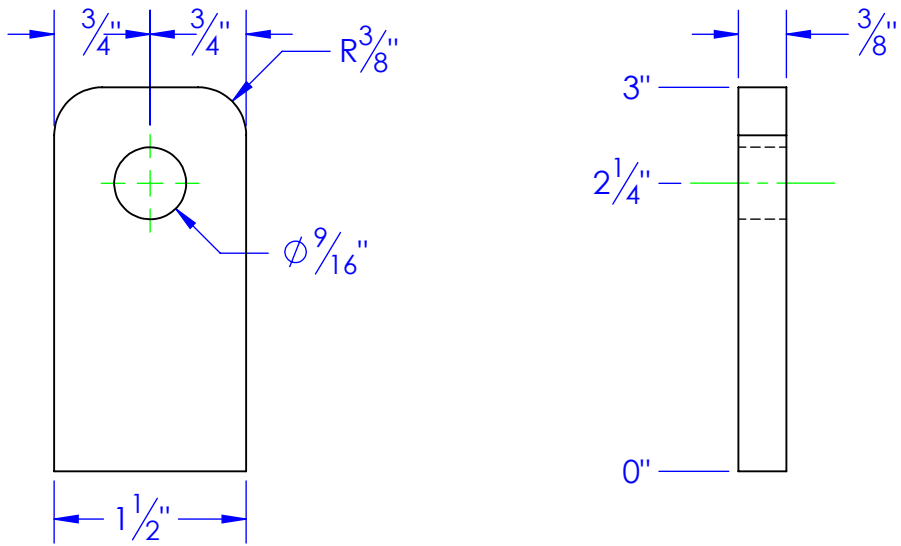
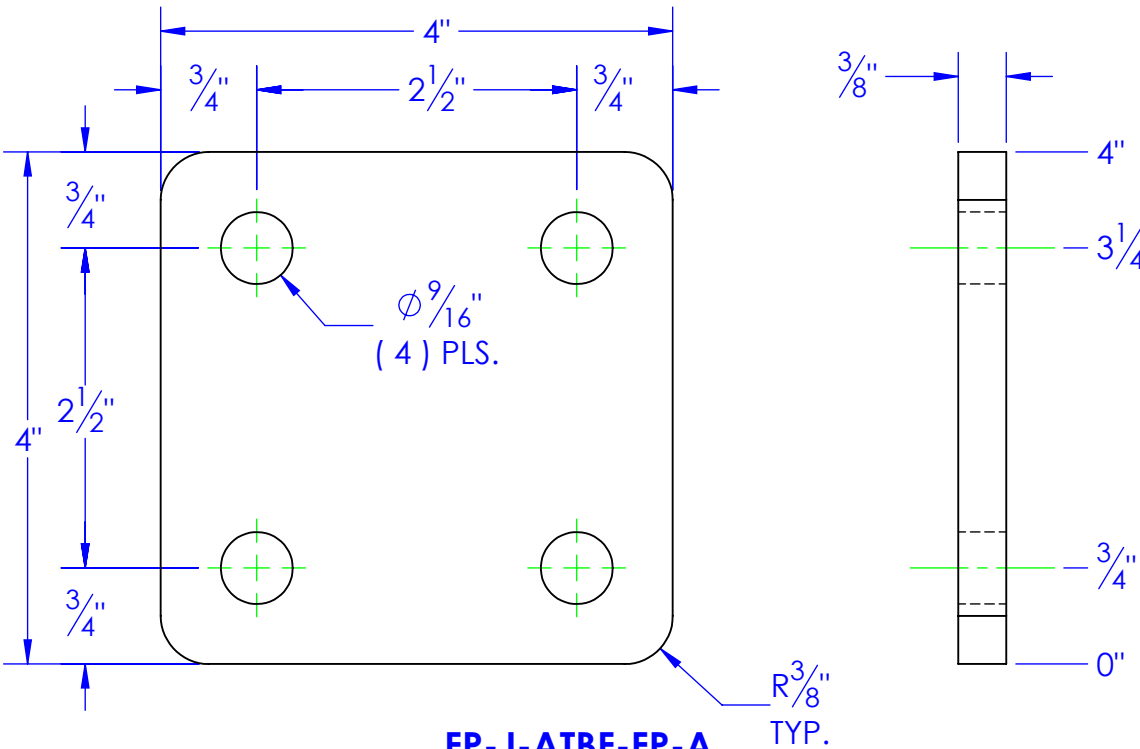


ITEM NO.	PART NUMBER	DESCRIPTION	MATERIAL	QTY.
1	FP-J-ATBF-FP-A	ADJUSTABLE TILTING BED FIXTURE, FOOT PAD	3/8" HRS	1
2	FP-J-ATBF-FP-B	ADJUSTABLE TILTING BED FIXTURE, FOOT GUSSET	3/8" HRS.	2

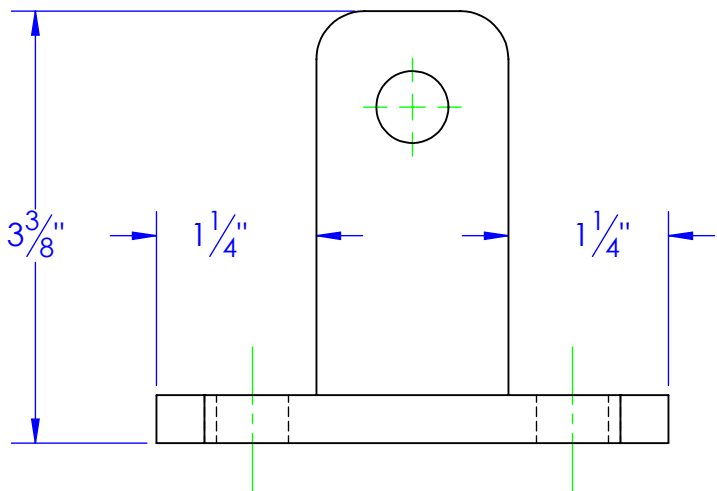
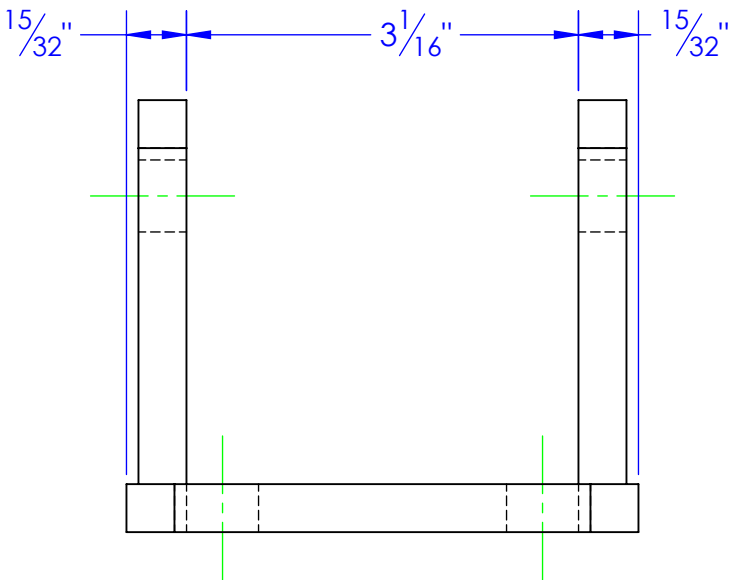
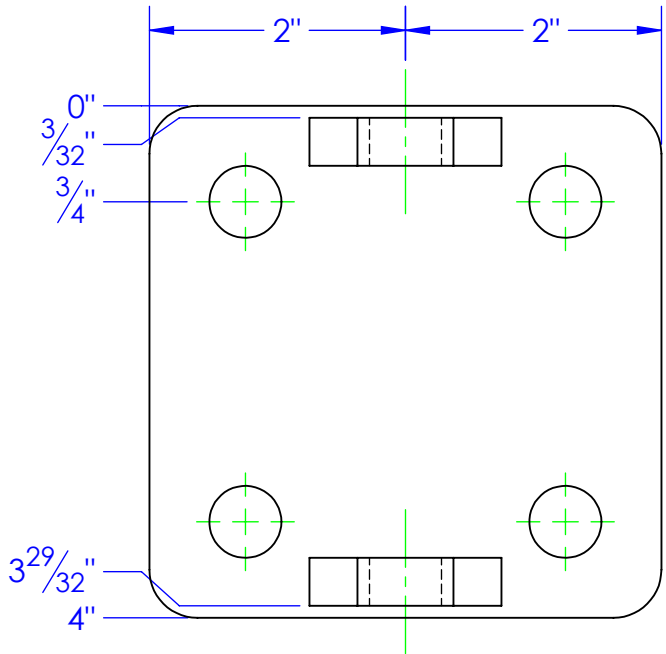
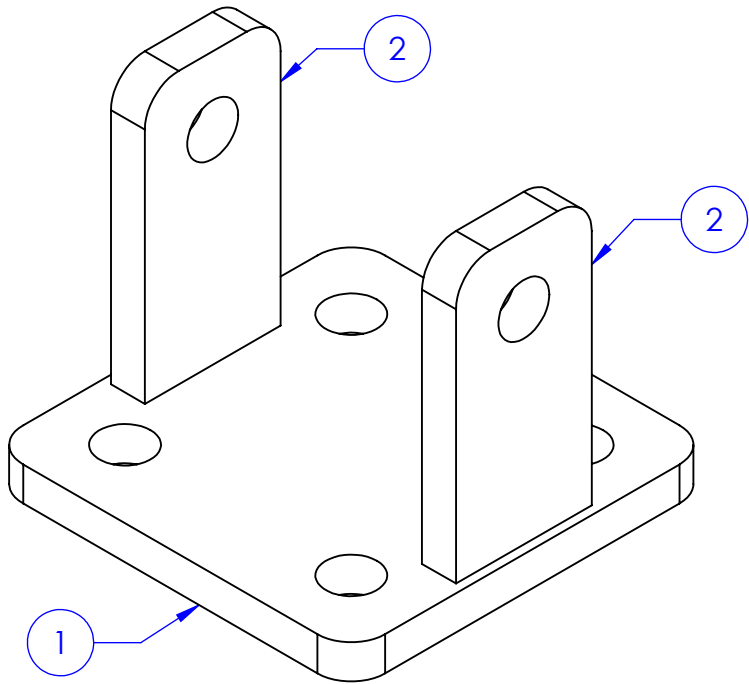
REVISIONS			
REV.	DESCRIPTION	DATE	APPROVED
A	INITIAL RELEASE	3/27/2012	



**FP-J-ATBF-FP-B**  
**ADJUSTABLE TILTING BED FIXTURE, FOOT GUSSET**  
**3/8" HRS.**



**FP-J-ATBF-FP-A**  
**ADJUSTABLE TILTING BED FIXTURE, FOOT PAD**  
**3/8" HRS**



**PROPRIETARY AND CONFIDENTIAL**  
THE INFORMATION CONTAINED IN THIS  
DRAWING IS THE SOLE PROPERTY OF  
<INSERT COMPANY NAME HERE>. ANY  
REPRODUCTION IN PART OR AS A WHOLE  
WITHOUT THE WRITTEN PERMISSION OF  
<INSERT COMPANY NAME HERE> IS  
PROHIBITED.

UNLESS OTHERWISE SPECIFIED:  
DIMENSIONS ARE IN INCHES  
TOLERANCES:  
FRACTIONAL  $\pm 1/16$   
ANGULAR: MACH  $\pm 1$  BEND  $\pm$   
TWO PLACE DECIMAL  $\pm 0.10$   
THREE PLACE DECIMAL  $\pm 0.005$   
MATERIAL  
DO NOT SCALE DRAWING

	NAME	DATE	P.O. BOX 248, SABETHA KS. 66534 (785) 284-3674 FAX (785) 284-3931		
DRAWN	HEATH	3/27/2012	<div>TRIPLE C</div> <div>INC.</div>		
PART #					
ASM #	FP-J-ATBF-FOOT PAD				
COMMENTS:			SIZE DWG. NO. REV		
ADJUSTABLE TILTING BED FIXTURE, FOOT PAD			B 95-1501 A		
			SCALE: 1:1.5		WEIGHT: 2.47
			SHEET 1 OF 1		